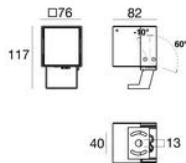
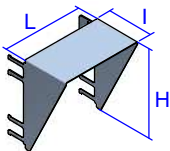


Instructions d'installation Periskop

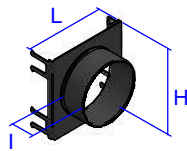


1. Écran anti-reflet



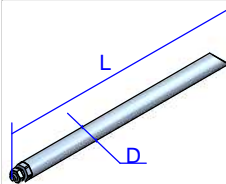
L = 71mm H = 76mm I = 40mm

2. Tube anti-éblouissement



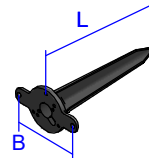
L = 71mm H = 76mm I = 22mm

3. Pieu terre



L = 160mm Ø = 10mm

4. Piquet



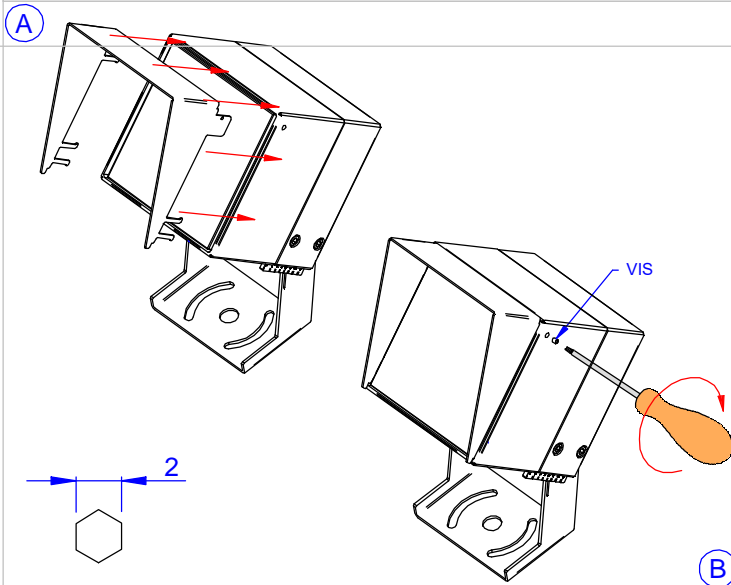
L = 204mm B = 100mm

5. ceinture de mâts

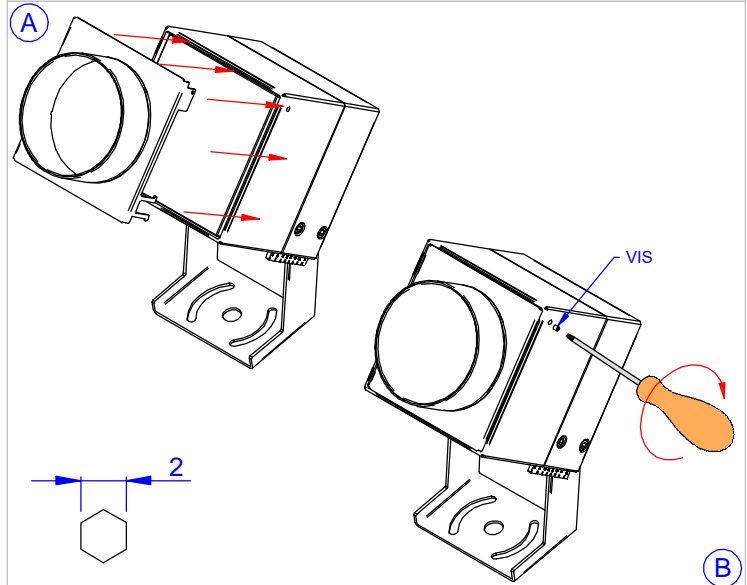


sur demande

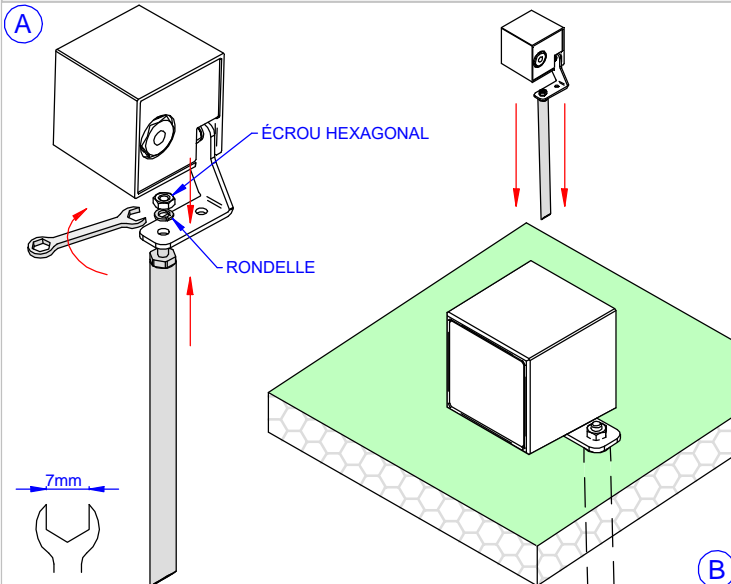
Montage Écran anti-reflet



Montage Tube anti-éblouissement



Montage pieu terre



Montage piquet

