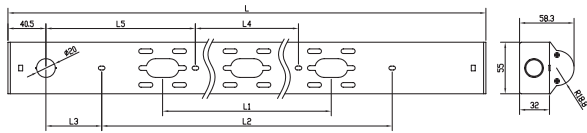


# Installationsanleitung Easyled

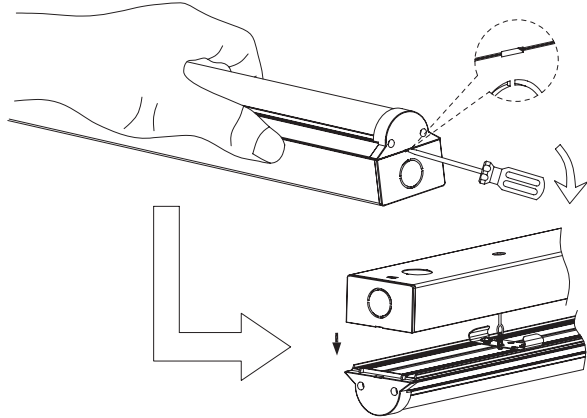
## 1. Vermessungen



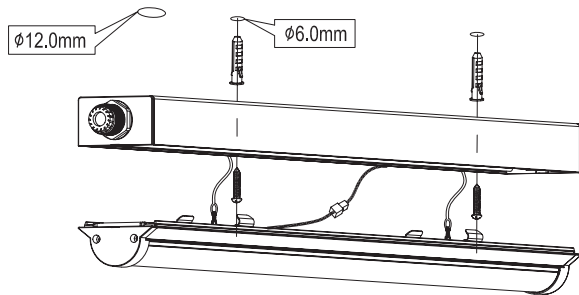
Artikel Nr.	L (mm)	L1 (mm)	L2 (mm)	L3 (mm)	L4 (mm)	L5 (mm)
TO-800610-..	600	-----	340	89.5	-----	-----
TO-801230-..	1200	610	800	159.5	-----	-----
TO-801555-..	1500	610	-----	-----	540	439.5

## 2. Aufbau-Installation:

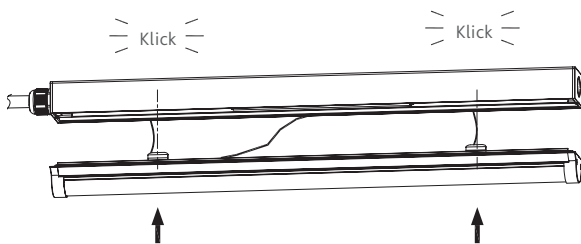
### 1. Leuchten-Abdeckung öffnen



Das Aluminium-Gehäuse an der Wand/Decke montieren

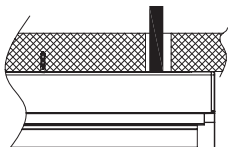


Abdeckung auf das Gehäuse klicken

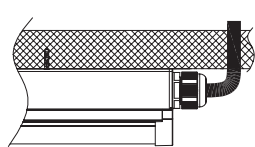


## 3. Verdrahtungs-Option

Rückseitige  
Einführung

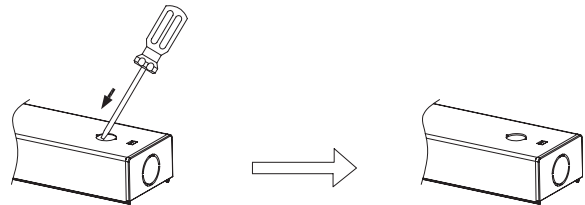


Seitliche  
Einführung

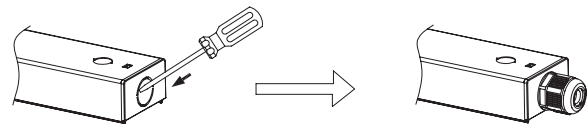


Kabel-Einführung ausbrechen und  
Kabel-Muffe einschrauben

Rückseitige Einführung

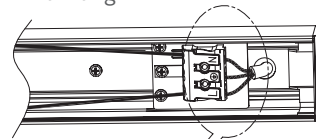


Seitliche Einführung

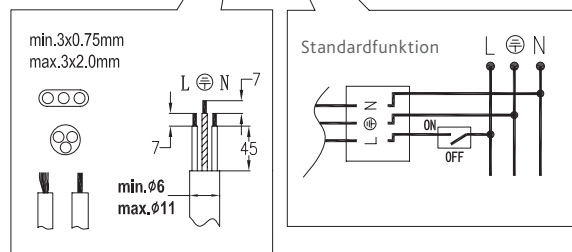
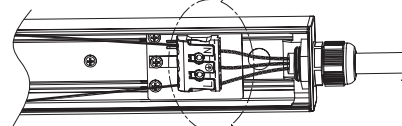


Kabel anschliessen gemäss Anschluss-Schema

Rückseitige Einführung



Seitliche Einführung



## 4. In der Verpackung enthalten:

